

TERMONT

RFID Tag Installation Instructions

Tools Needed – Flat-head screwdriver

- Affix RFID tag to the Driver's Side mirror bracket **as high as possible**.
- Secure tag in place by wrapping clamps around the mirror bracket.
- Place the metal bands **OVER** the Metal tabs on the RFID tag bracket.



Small clamps are provided as standard. Two sets of small clamps can be combined to accommodate large diameter single arm mirror brackets.

Standard Mirror Top Bar Installation



Alternative Single Arm Mirror Installation



To ensure the highest degree of RFID read accuracy, it is expected that the RFID tag is mounted on the mirror bracket.

DO NOT INSTALL ON WINDSHIELD

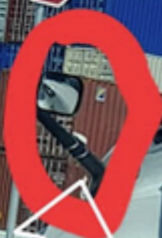
Here are few more ideas where to install.

STOP

3AL x 8

DRY
CONTAINER
\$395
\$400

SOHP
TRANSPORTATION INC





8

TraPac
TERMINAL
BERTHS
136 - 147

STOP

